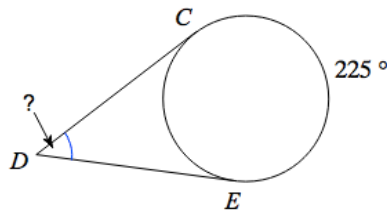


LEVEL: EMERGING

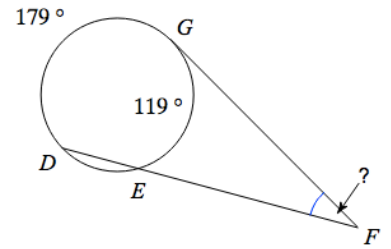
Directions: Find the indicated measure.

1)



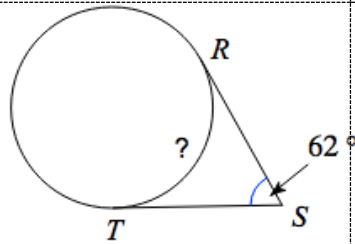
? = _____

2)



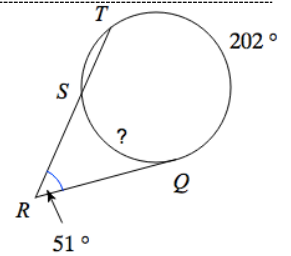
? = _____

3)



? = _____

4)

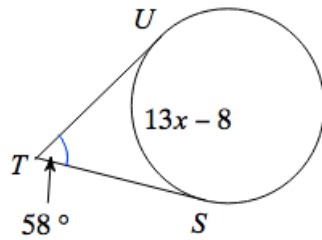


? = _____

LEVEL: PROFICIENT

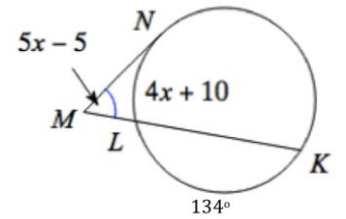
Directions: Find the indicated measure.

5)



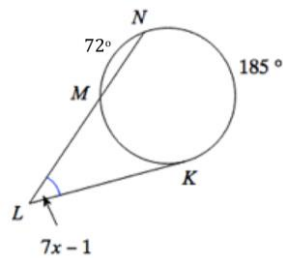
$x =$ _____

6)



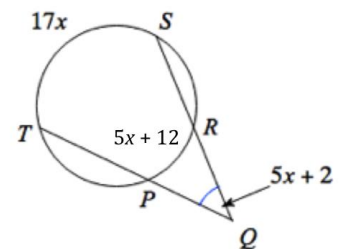
$x =$ _____

7)



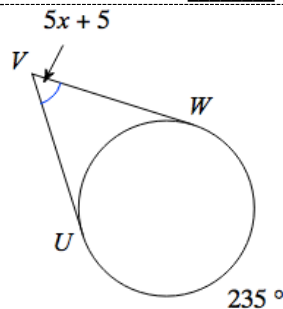
$x =$ _____

8)



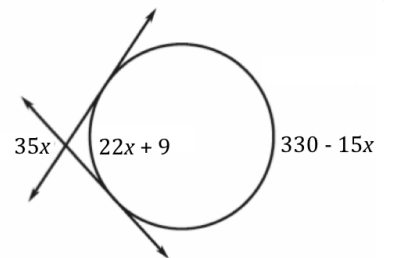
$x =$ _____

9)



$x =$ _____

10)

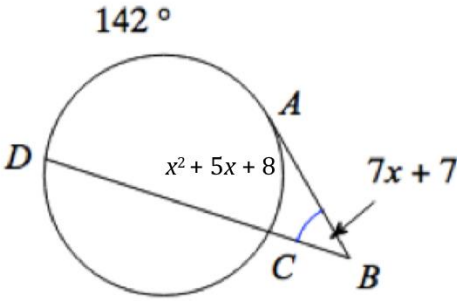


$x =$ _____

LEVEL: MASTERY

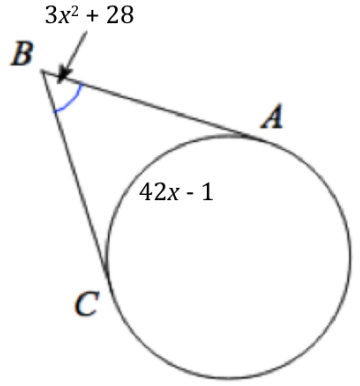
Directions: Find the measure of the indicated measure.

11)



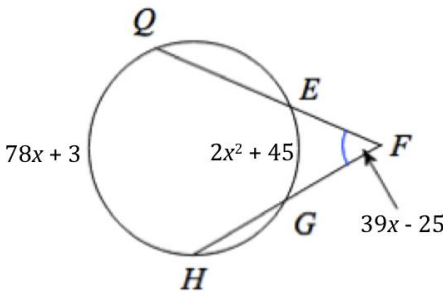
$m\angle ABD = \underline{\hspace{2cm}}$

12)



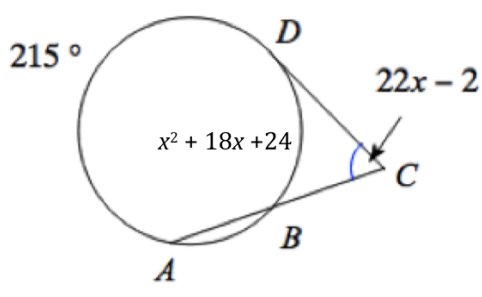
$m\widehat{AC} = \underline{\hspace{2cm}}$

13)



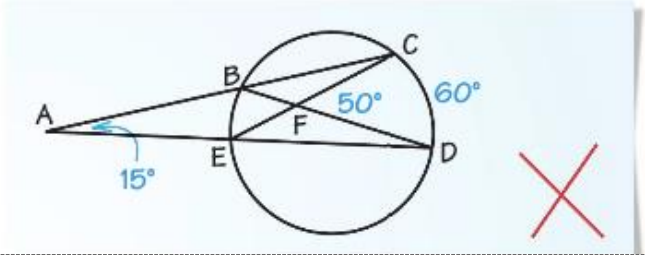
$m\widehat{QH} = \underline{\hspace{2cm}}$

14)



$m\widehat{ACD} = \underline{\hspace{2cm}}$

15) Describe the error in the diagram.



16) In the diagram at the right, television cameras are positioned at A, B, and C to record what happens on stage. The stage is an arc of $\odot A$.

a) Find $m\angle A$, $m\angle B$, and $m\angle C$.

b) The wall is tangent to the circle. Find x without using the measure of $\angle C$.

